



QUICK SELECTION / Selezione veloce							input speed (n ₁) = 1400 min ⁻¹									
Output Speed n ₂ [min ⁻¹]	Ratio i	Motor power P _{1M} [kW]	Output torque M _{2M} [Nm]	Service factor f.s.	Nominal power P _{1R} [kW]	Nominal torque M _{2R} [Nm]	B5 motor flanges not available				Available B14 motor flanges			Output Shaft 	Ratios code 	
							-	-	-	-	Q	R	T			
892	1.57	1.5	15.7	1.3	1.90	20	-	-	-	-	C	C		2844	standard ø19 On request ø14	-
493	2.84	1.5	28.4	1.2	1.84	35	-	-	-	-	C	C		1954		
426	3.29	1.5	32.9	1.2	1.73	38	-	-	-	-	C	C		1756		
362	3.87	1.5	38.7	1.0	1.54	40	-	-	-	-	C	C		1558		
303	4.62	1.5	46.1	1.0	1.54	47	-	-	-	-	C	C		1360		
222	6.30	1.1	46.0	1.0	1.10	46	-	-	-	-	C	C		1063		
170	8.22	0.55	30.4	1.2	0.69	38	-	-	-	-	C	C		974		
130	10.86	0.37	26.8	1.0	0.38	28	-	-	-	-	C	C		776		

The dynamic efficiency is **0.98** for all ratios

Motor Flanges Available Flange Motore Disponibili
 B) Supplied with Reduction Bushing Fornito con Bussola di Riduzione
 B) Available on Request without reduction bushing Disponibile a Richiesta senza Bussola di Riduzione
 C) Motor Flange Holes Position Posizione Fori Flangia Motore

EN Unit **4111** is supplied with synthetic oil for lifetime lubrication, no maintenance is necessary.
For complete documentation please visit our web site.

I Il riduttore **4111** viene fornito completo di olio sintetico per la lubrificazione permanente e non necessita di alcuna manutenzione.
Per la documentazione completa consulta il nostro sito.

D Das Getriebe **4111** ist mit synthetischem Öl gefüllt und ist lebensdauergeschmiert.
Die komplette Dokumentation, Wartungs- und Inbetriebnahmeanleitungen finden Sie unter.

E El reductor tamaño **4111** se suministra, lubricado de por vida con aceite sintético y no requieren mantenimiento alguna.
Para documentación completa, consultar nuestra Web.

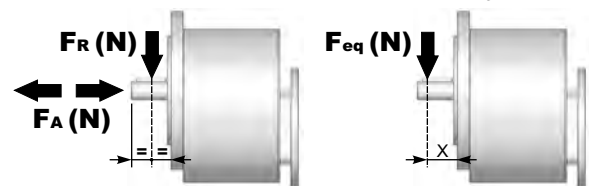
Life lubrication - Fully synthetic oil

Mounting position to be specified - B6-B7-B8-V1-V3-V8

RADIAL AND AXIAL LOADS

Output shaft

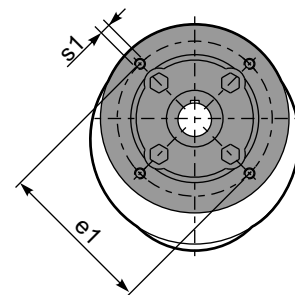
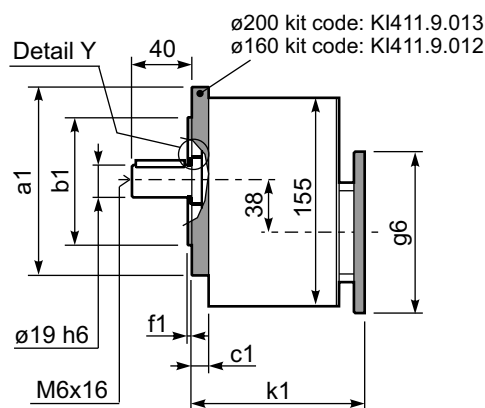
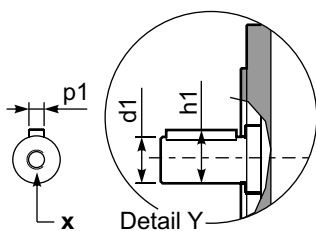
Albero di uscita



n ₂	FA	FR	n ₂	FA	FR	n ₂	FA	FR
700	182	910	400	230	1150	200	290	1450
600	100	1000	300	250	1250	140	320	1600

P4111-F... Output flange
 flangia di uscita

8.2 kg
 Gearbox weight / peso riduttore



Output shafts / albero di uscita

	Shaft - d1	p1	h1	x
Standard	ø 19x40	6	21.5	M6x16
*On request A richiesta	ø 14x30	5	16	M5x13

Output flanges / flange di uscita

	a1 ø	b1	c1	e1	f1	s1
Standard	200	130	12.5	165	3.5	M10x12
*On request A richiesta	160	110	12.5	130	3.5	M8x12

Input flanges / flange di entrata

	g6	k1	kit code
	105 (71B14)	127.5	KI63.4.047
	120 (80B14)	128.5	KI63.4.046
	140 (90B14)	129.5	KI63.4.041

* Please contact us for minimum quantity / Contattarci per quantità minima.

SELECT THIS TYPE AND THIS SPECIFIC SIZE ON THE WEB PAGES TO GET COMPLETE TECHNICAL DATA.
 Selezionare tipo e grandezza specifica nel sito web per la documentazione completa.