



#### QUICK SELECTION / Selezione veloce

input speed ( $n_1$ ) = 1400 min<sup>-1</sup>

Output Speed $n_2$ [min <sup>-1</sup> ]	Ratio $i$	Motor power $P_{1M}$ [kW]	Output torque $M_{2M}$ [Nm]	Service factor f.s.	Nominal power $P_{1R}$ [kW]	Nominal torque $M_{2R}$ [Nm]	Available B5 motor flanges		Available B14 motor flanges	Dynamic efficiency RD	Tooth Module [mm]	Ratios code
							-D	-E	-U			
200	<b>7</b>	4.0	168	2.9	<b>11.5</b>	<b>483</b>	B	B		88	5.5	01
140	<b>10</b>	4.0	235	2.2	<b>9.0</b>	<b>525</b>	B	B		86	5.4	02
88	<b>16</b>	4.0	358	1.5	<b>6.0</b>	<b>536</b>	B	B		82	5.3	03
70	<b>20</b>	4.0	447	1.2	<b>4.9</b>	<b>546</b>	B	B		82	4.5	04
61	<b>23</b>	3.0	377	1.4	<b>4.1</b>	<b>515</b>	B	B		80	3.9	05
47	<b>30</b>	3.0	467	1.4	<b>4.2</b>	<b>651</b>	B	B		76	5.6	06
37	<b>38</b>	3.0	583	1.1	<b>3.3</b>	<b>641</b>	B	B		75	4.7	07
31	<b>45</b>	2.2	493	1.2	<b>2.7</b>	<b>599</b>	B	B		73	4.0	08
26	<b>53</b>	2.2	557	1.1	<b>2.5</b>	<b>620</b>	B	B		70	3.5	09
22	<b>64</b>	1.5	452	1.2	<b>1.8</b>	<b>536</b>	B			69	2.9	10
16.7	<b>84</b>	1.1	410	1.2	<b>1.3</b>	<b>494</b>	B			65	2.2	11
14.1	<b>99</b>	1.1	446	1.1	<b>1.2</b>	<b>483</b>	B			60	1.9	12

\* The nominal power should be reduced if the ambient temperature is  $\geq 30^\circ\text{C}$ , or when a cooler gearbox is required.

\* Diminuire la potenza nominale in caso di temperatura ambiente  $\geq 30^\circ\text{C}$  o se è richiesta una bassa temperatura di utilizzo del riduttore.

- Motor Flanges Available**  
Flange Motore Disponibili
- B) Supplied with Reduction Bushing**  
Fornito con Bussola di Riduzione
- B) Available on Request without reduction bushing**  
Disponibile a Richiesta senza Bussola di Riduzione
- C) Motor Flange Holes Position**  
Posizione Fori Flangia Motore

**EN** Unit I11 is supplied with synthetic oil, providing "long life" lubrication. For mounting position V5-V6 please contact us. See table 1 for lubrication and recommended quantity. In table 2 please see possible radial loads and axial loads on the gearbox.

**I** Il riduttore tipo I11 viene fornito lubrificato a vita con olio sintetico. Per posizioni V5-V6 contattare il ns. servizio tecnico. Vedi tab.1 per oli e quantità consigliati. In tab.2 sono presenti i carichi radiali e assiali applicabili al riduttore.

**D** Für die Lebensdauerschmierung ist das Getriebe der Größe I11 mit synthetischem Öl befüllt. Bei Einbaulage V5 oder V6 bitten wir um Rücksprache. In Tabelle 1 ist die Schmiermenge und das empfohlene Schmiermittel angegeben. In Tabelle 2 sind die zulässigen Radial - und Axialbelastungen des Getriebes aufgeführt.

**F** Le réducteur de type I11 est fourni lubrifié à vie avec de l'huile synthétique. Concernant les positions V5.V6, contactez notre service d'assistance technique. Voir tableau 1 concernant les huiles et les quantités conseillées. Les charges radiales et axiales applicables au réducteur sont précisées dans le tableau 2.

**E** El reductor tamaño I11 se suministra, lubricado de por vida con aceite sintético. Para las posiciones V5 y V6 contactar con nuestro servicio técnico. Ver tabla 1, para cantidades y aceites recomendados. En la tabla 2, se encuentran las cargas radiales y axiales admitidas por el reductor.

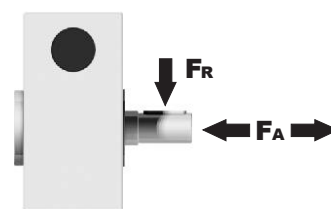
Standard	On request				
3.50 LT	2.50 LT	2.50 LT	2.10 LT	1.60 LT	1.60 LT
AGIP Telium VSF 320			SHELL Omala S4 WE 320		

For all details on lubrication and plugs check our website **tab. 1**  
Per maggiori dettagli su lubrificazione e tappi olio vedi il nostro sito web

#### RADIAL AND AXIAL LOADS

##### Output shaft

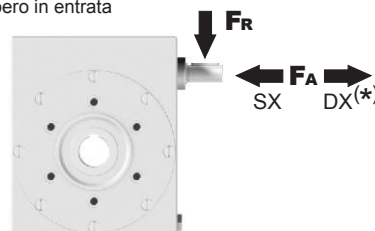
Albero di uscita



$n_2$ [min <sup>-1</sup> ]	FA [N]	FR [N]
200	600	2900
150	700	3300
100	750	3600
75	800	4000
50	920	4600
25	1200	6000
15	1400	7000

##### Input shaft

albero in entrata



$n_1$ [min <sup>-1</sup> ]	FA [N]	FR [N]
1400	228	1140

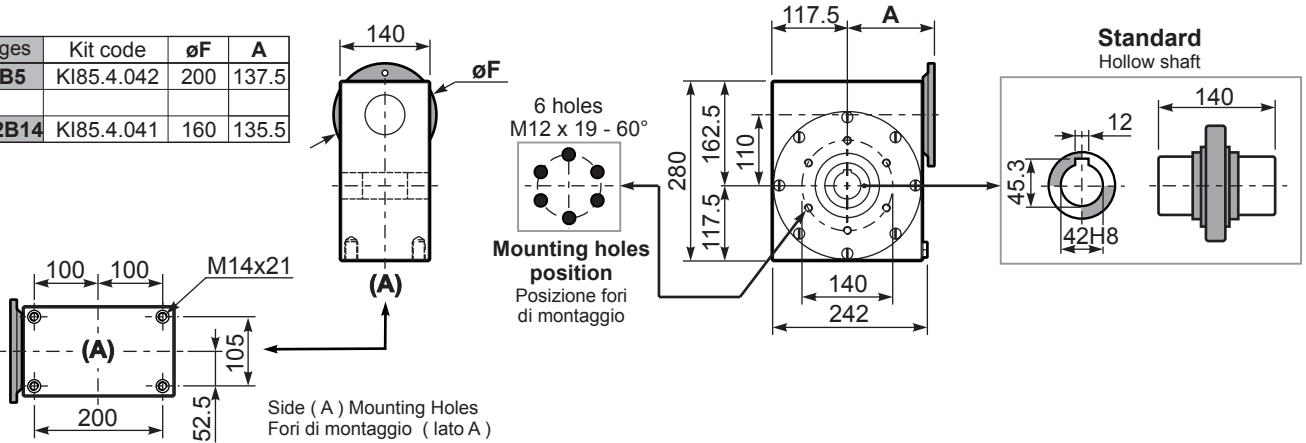
\*Strong axial loads in the DX direction are not allowed.  
Non sono consentiti forti carichi assiali con direzione DX

tab. 2

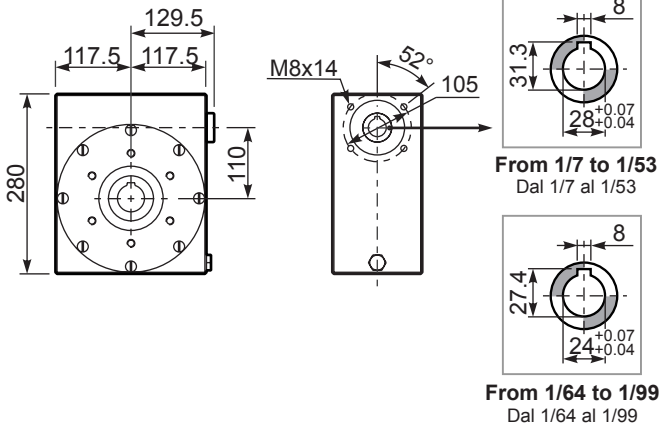
Gearbox weight  
peso riduttore **38.5 kg**

PI11UN... Basic wormbox  
Riduttore base

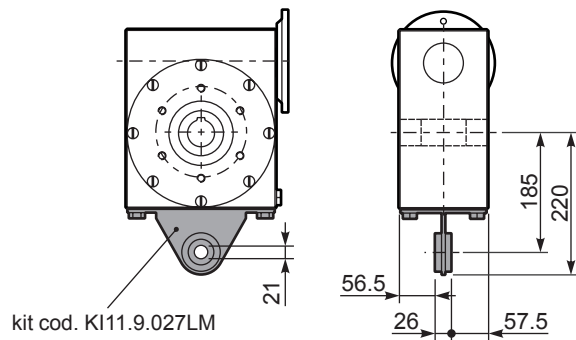
M. flanges	Kit code	øF	A
80-90B5	KI85.4.042	200	137.5
100-112B14	KI85.4.041	160	135.5



B111UN... Modular base  
Base modulare



PI11BR... Reaction arm  
Braccio di reazione



R111UN... Input shaft  
Albero in entrata

