



QUICK SELECTION / Selezione veloce

input speed (n_1) = 1400 min⁻¹

| Output Speed n_2 [min ⁻¹] | Ratio i | Motor power P_{1M} [kW] | Output torque M_{2M} [Nm] | Service factor $f.s.$ | Nominal power P_{1R} [kW] | Nominal torque M_{2R} [Nm] | Available B5 motor flanges | | Available B14 motor flanges | | | Output Shaft | Ratios code |
|---|---------------|---------------------------------|-----------------------------------|--------------------------|-----------------------------------|------------------------------------|----------------------------|----|-----------------------------|----|----|------------------|-------------|
| | | | | | | | B | C | O | P | Q | | |
| | | | | | | | 63 | 71 | 56 | 63 | 71 | | |
| 18.8 | 74.33 | 0.37 | 176 | 1.8 | 0.67 | 320 | | | C | C | | 191313 | 01 |
| 17.0 | 82.56 | 0.37 | 196 | 1.6 | 0.60 | 320 | | | C | C | | 151318 | 02 |
| 16.0 | 87.48 | 0.37 | 207 | 1.5 | 0.57 | 320 | | | C | C | | 131713 | 03 |
| 13.8 | 101.40 | 0.37 | 240 | 1.3 | 0.49 | 320 | | | C | C | | 151313 | 04 |
| 11.4 | 122.57 | 0.37 | 291 | 1.1 | 0.41 | 320 | | | C | C | | 131313 | 05 |
| 10.1 | 138.59 | 0.37 | 329 | 1.0 | 0.36 | 320 | | | C | C | | 101318 | 06 |
| 8.7 | 160.82 | 0.25 | 257 | 1.2 | 0.31 | 320 | | | C | C | | 91713 | 07 |
| 8.2 | 170.20 | 0.25 | 272 | 1.2 | 0.29 | 320 | | | C | C | | 101313 | 08 |
| 7.6 | 183.48 | 0.25 | 294 | 1.1 | 0.27 | 320 | | | C | C | | 91318 | 09 |
| 6.5 | 214.15 | 0.18 | 262 | 1.2 | 0.23 | 320 | | | C | C | | 71713 | 10 |
| 6.2 | 225.33 | 0.18 | 276 | 1.2 | 0.22 | 320 | | | C | C | | 91313 | 11 |
| 5.7 | 244.32 | 0.18 | 299 | 1.1 | 0.20 | 320 | | | C | C | | 71318 | 12 |
| 5.5 | 254.15 | 0.18 | 311 | 1.0 | 0.20 | 320 | | | C | C | | 61713 | 13 |
| 4.8 | 289.96 | 0.18 | 355 | 0.9 | 0.17 | 320 | | | C | C | | 61318 | 14 |
| 4.7 | 300.05 | 0.18 | 367 | 0.9 | 0.17 | 320 | | | C | C | | 71313 | 15 |
| 3.9 | 356.09 | 0.12 | 282 | 1.1 | 0.14 | 320 | | | C | C | | 61313 | 16 |

The dynamic efficiency is **0.94** for all ratios

Motor Flanges Available
Flange Motore Disponibili

B) Supplied with Reduction Bushing
Fornito con Bussola di Riduzione

B) Available on Request without reduction bushing
Disponibile a Richiesta senza Bussola di Riduzione

C) Motor Flange Holes Position
Posizione Fori Flangia Motore

EN Unit **503C** is supplied with synthetic oil for lifetime lubrication, no maintenance is necessary. See table 1 for lubrication and recommended quantity. In table 2 please see possible radial loads and axial loads on the gearbox.

I Il riduttore **503C** viene fornito completo di olio sintetico per la lubrificazione permanente e non necessita di alcuna manutenzione. Vedi tab.1 per oli e quantità consigliati. In tab.2 sono presenti i carichi radiali e assiali applicabili al riduttore.

D Das Getriebe **503C** ist mit synthetischem Öl gefüllt und ist lebensdauergeschmiert. In Tabelle 1 ist die Schmiermenge und das empfohlene Schmiermittel angegeben. In Tabelle 2 sind die zulässigen Radial- und Axialbelastungen des Getriebes aufgeführt.

F Le réducteur **503C** est fourni complet avec de l'huile synthétique pour la lubrification permanente et ne nécessite aucun entretien. Voir tableau 1 concernant les huiles et les quantités conseillées. Les charges radiales et axiales applicables au réducteur sont précisées dans le tableau 2.

E El reductor tamaño **503C** se suministra, lubricado de por vida con aceite sintético y no requieren mantenimiento alguna. Ver tabla 1, para cantidades y aceites recomendados. En la tabla 2, se encuentran las cargas radiales y axiales admitidas por el reductor.

| Standard supplied | For these mounting position specify in the order or add oil Per queste posizioni specificare in fase d'ordine o aggiungere olio | | | | | |
|---------------------|--|---------|-----------------------|---------|---------|-----|
| | | | | | | |
| 1.35 LT | 0.80 LT | 0.80 LT | 0.70 LT | 1.50 LT | 0.85 LT | Ask |
| AGIP Telium VSF 320 | | | SHELL Omala S4 WE 320 | | | |

For all details on lubrication and plugs check our website [tab. 1](#)
Per maggiori dettagli su lubrificazione e tappi olio vedi il nostro sito web

RADIAL AND AXIAL LOADS

Output shaft
Albero di uscita

$F_R (N)$
 $F_A (N)$

$F_{eq} = F_R \cdot \frac{56.5}{X+26.5}$
 $F_{eq} (N)$

| n_2 | FA | FR | n_2 | FA | FR | n_2 | FA | FR |
|-------|-----|------|-------|-----|------|-------|------|------|
| 300 | 500 | 2500 | 140 | 640 | 3200 | 70 | 820 | 4100 |
| 250 | 540 | 2700 | 120 | 680 | 3400 | 40 | 1020 | 5100 |
| 200 | 580 | 2900 | 85 | 760 | 3800 | 15 | 1100 | 5500 |

On request reinforced bearings to increase loads.
A richiesta cuscinetti rinforzati per aumentare i carichi.

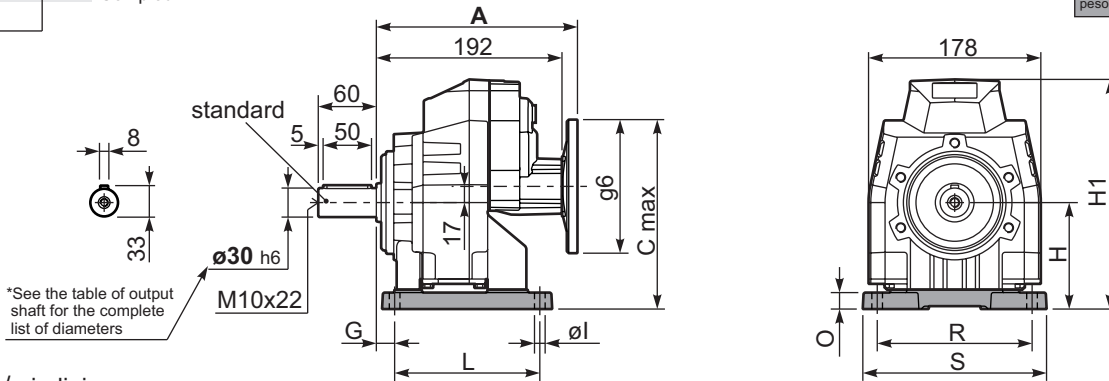
Input shaft
Albero in entrata

| n_1 | FA | FR |
|-------|-----|-----|
| 1400 | 140 | 700 |
| 900 | 160 | 800 |
| 500 | 190 | 950 |

tab. 2

P503C**S4**... With feet
Con piedini

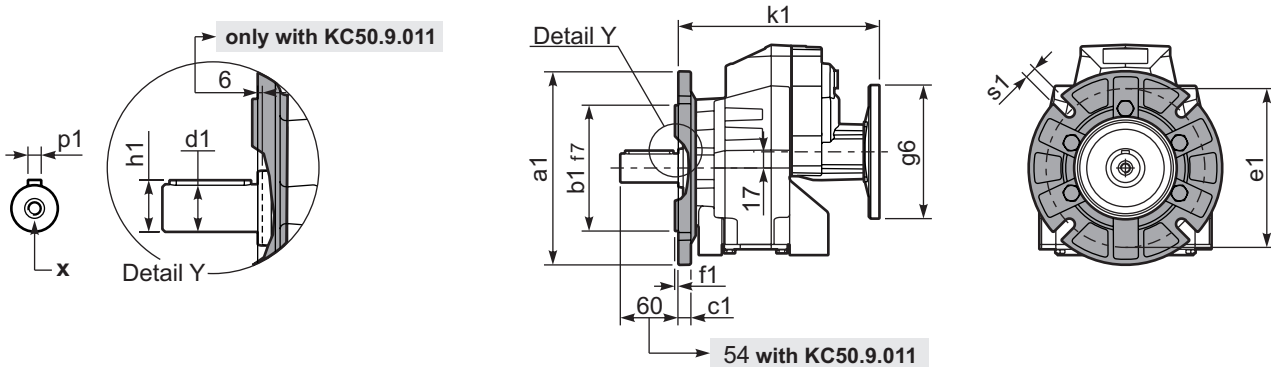
Gearbox weight **15.0 kg**
peso riduttore With flange
With feet **17.0 Kg**



Feet / piedini

| Feet Code | Market reference | G | H | R | L | S | H1 | O | øl | B5 max. Flange | kit code |
|-----------|------------------|----|-----|-----|-----|-----|-----|----|------|----------------|------------|
| B3 | 312/3 | 18 | 110 | 160 | 130 | 190 | 237 | 17 | 11 | - | C50C.9.022 |
| S4 | 47 | 30 | 115 | 135 | 165 | 170 | 242 | 22 | 13.5 | - | C50C.9.024 |
| - | - | - | - | - | - | - | - | - | - | - | - |
| - | - | - | - | - | - | - | - | - | - | - | - |
| - | - | - | - | - | - | - | - | - | - | - | - |

P503C-**F**... Output flanges
flange di uscita



*Available output shaft / Albero di uscita

| | Shaft - d1 | p1 | h1 | x |
|---------------------------|------------|----|----|--------|
| Standard | ø 30x60 | 8 | 33 | M10x22 |
| On request A richiesta | ø 35x70 | 10 | 38 | M10x22 |
| | - | - | - | - |

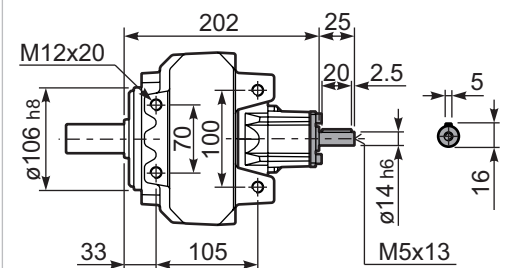
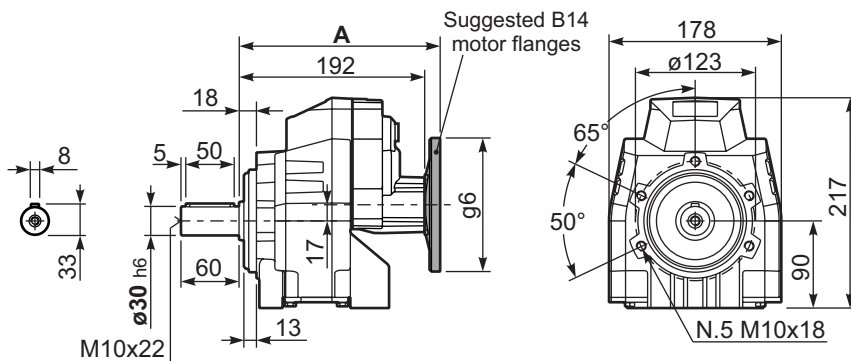
Available output flanges / flange di uscita

| a1 ø | b1 | c1 | e1 | f1 | s1 | kit code |
|------|-----|------|-----|-----|----|------------|
| 160 | 110 | 14 | 130 | 3.5 | 11 | KC50.9.011 |
| 200 | 130 | 13 | 165 | 3.5 | 11 | KC50.9.012 |
| 250 | 180 | 15.5 | 215 | 4 | 14 | KC50.9.013 |

With flange and feet only on request. Ask for compatibility

P503C-**N**... Basic gearbox
Riduttore base

R503C-**N**... Input Shaft
Albero in entrata



| B5 Motor Flanges | A | C _{max} | g6 | k1 | kit code | k1 with KC50.9.011 |
|------------------|-------|------------------|-----|-------|------------|--------------------|
| 63 B5 | 210.5 | 202 | 140 | 210.5 | K050.4.041 | 216.5 |
| 71 B5 | 208 | 212 | 160 | 208 | K050.4.042 | 214 |

| B14 Motor Flanges | A | C _{max} | g6 | k1 | kit code | k1 with KC50.9.011 |
|-------------------|-------|------------------|-----|-------|------------|--------------------|
| 56 B14 | 208 | 172 | 80 | 208 | KC40.4.049 | 214 |
| 63 B14 | 210.5 | 177 | 90 | 210.5 | K050.4.047 | 216.5 |
| 71 B14 | 208 | 184.5 | 105 | 208 | K050.4.045 | 214 |