



QUICK SELECTION / Selezione veloce							input speed (n <sub>1</sub> ) = 1400 min <sup>-1</sup>										
Output Speed n <sub>2</sub> [min <sup>-1</sup> ]	Ratio i	Motor power P <sub>1M</sub> [kW]	Output torque M <sub>2M</sub> [Nm]	Service factor f.s.	Nominal power P <sub>1R</sub> [kW]	Nominal torque M <sub>2R</sub> [Nm]	Available B5 motor flanges				Available B14 motor flanges				Output Shaft 	Ratios code	
							C	D	E	F	R	T	U	V			
1077	1.30	4	34	1.2	4.6	40	B								3039	standard ø28	01
571	2.45	4	64	1.1	4.3	70	B							2049	02		
423	3.31	4	87	1.0	4.1	90	B							1653	03		
325	4.31	4	113	1.0	3.8	110	B							1356	04		
266	5.27	3	104	1.1	3.1	110	B							1158	On request		05
184	7.63	2.2	111	1.0	2.2	110	B							861	ø19		06
133	10.50	1.1	77	1.0	1.1	80	B							663	ø24		07

The dynamic efficiency is 0.98 for all ratios

Motor Flanges Available Flange Motore Disponibili  
 Supplied with Reduction Bushing Fornito con Bussola di Riduzione  
 Available on Request without reduction bushing Disponibile a Richiesta senza Bussola di Riduzione  
 Motor Flange Holes Position Posizione Fori Flangia Motore

**EN** Unit 511A is supplied with synthetic oil for lifetime lubrication, no maintenance is necessary. See table 1 for lubrication and recommended quantity. In table 2 please see possible radial loads and axial loads on the gearbox. For complete documentation please visit our web site.

**I** Il riduttore 511A viene fornito completo di olio sintetico per la lubrificazione permanente e non necessita di alcuna manutenzione. Vedi tab.1 per oli e quantità consigliati. In tab.2 sono presenti i carichi radiali e assiali applicabili al riduttore. Per la documentazione completa consulta il nostro sito.

**D** Das Getriebe 511A ist mit synthetischem Öl gefüllt und ist lebensdauergeschmiert. In Tabelle 1 ist die Schmiermenge und das empfohlene Schmiermittel angegeben. In Tabelle 2 sind die zulässigen Radial- und Axialbelastungen des Getriebes aufgeführt. Die komplette Dokumentation, Wartungs- und Inbetriebnahmeanleitungen finden Sie unter.

**E** El reductor tamaño 511A se suministra, lubricado de por vida con aceite sintético y no requieren mantenimiento alguna. Ver tabla 1, para cantidades y aceites recomendados. En la tabla 2, se encuentran las cargas radiales y axiales admitidas por el reductor. Para documentación completa, consultar nuestra Web.

LUBRICATION 511A Oil Quantity 0.29 Lt.	
AGIP Telium VSF 320	SHELL Omala S4 WE 320

For all details on lubrication and plugs check our website  
Per maggiori dettagli su lubrificazione e tappi olio vedi il nostro sito web

tab. 1

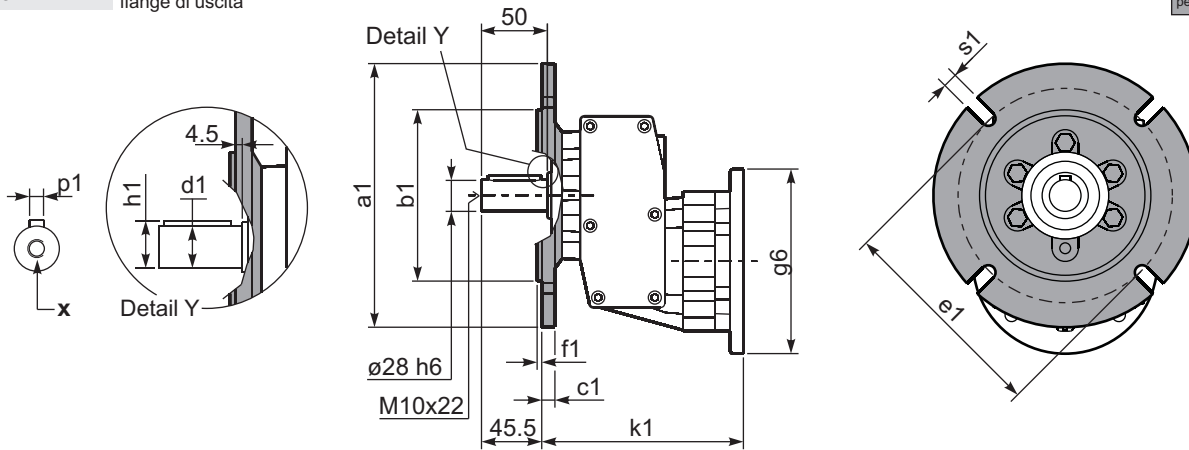
RADIAL AND AXIAL LOADS											
<b>Output shaft</b> Albero di uscita			$F_{eq} = F_R \cdot \frac{52.5}{X+22.5}$								
n <sub>2</sub>	FA	FR	n <sub>2</sub>	FA	FR	n <sub>2</sub>	FA	FR	n <sub>2</sub>	FA	FR
700	294	1470	400	370	1850	200	460	2300	140	510	2550
600	320	1600	300	400	2000	140	510	2550			
<b>Input shaft</b> Albero in entrata											
n <sub>1</sub>	FA	FR									
1400	400	2000									
900	440	2200									

tab. 2

SELECT THIS TYPE AND THIS SPECIFIC SIZE ON THE WEB PAGES TO GET COMPLETE TECHNICAL DATA. Selezionare tipo e gandezza specifica nel sito web per la documentazione completa.

**P511-F...** Output flanges  
flange di uscita

Gearbox weight  
peso riduttore **5.00 kg**



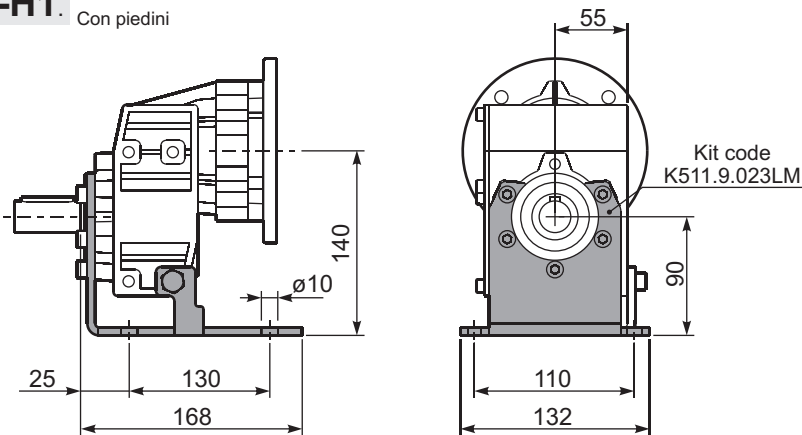
**\*Available output shaft / Albero di uscita**

	Shaft - d1	p1	h1	x
Standard	∅ 28x50	8	31	M10x22
On request A richiesta	∅ 24x50	8	27	M8x19
	∅ 19x40	6	21.5	M6x16

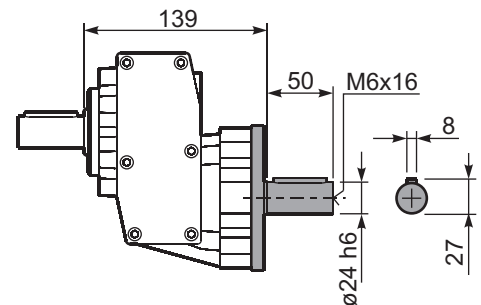
**Available output flanges / flange di uscita**

a1 ∅	b1	c1	e1	f1	s1	kit code
120	80	10	100	3	9	KC40.9.010
140	95	10	115	3	9	KC40.9.011
160	110	10	130	3	9	KC40.9.012
200	130	11	165	3.5	11	KC40.9.013
250	180	11.5	215	3.5	14	KC40.9.014

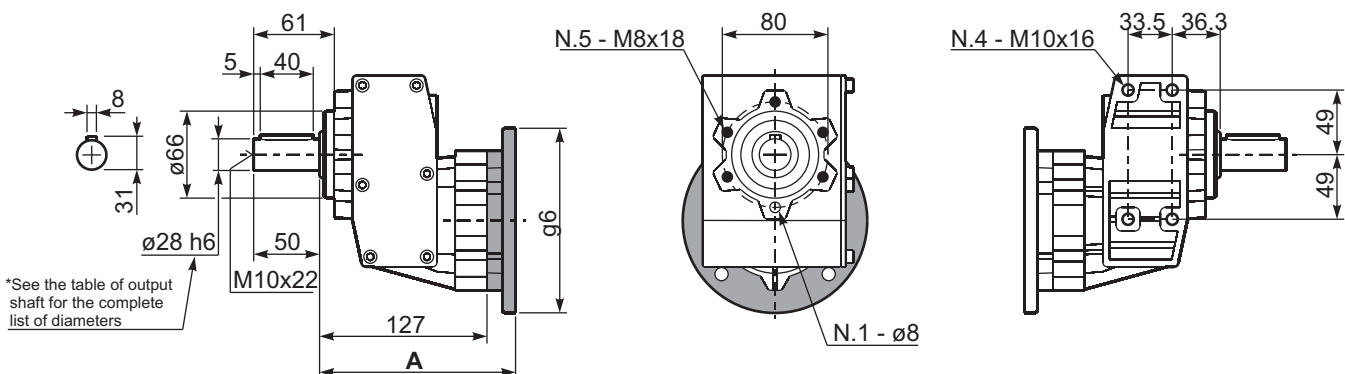
**P511A-H1.** With feet  
Con piedini



**R511A-N...** Input Shaft  
Albero in entrata



**P511-N...** Basic gearbox  
Riduttore base



\*See the table of output shaft for the complete list of diameters

B5 Motor Flanges	A	g6	k1	kit code
71 B5	145	160	149.5	KC023.4.041
80/90 B5	147	200	151.5	KC023.4.042
100/112 B5	153	250	157.5	KC023.4.043

B14 Motor Flanges	A	g6	k1	kit code
80 B14	145	120	149.5	KC085.4.046
90 B14	145	140	149.5	KC085.4.045
100/112 B14	145	160	149.5	KC085.4.047
132 B14	175	200	188	KC50.4.041