

QUICK SELECTION / Selezione veloce

input speed (n_1) = 1400 min⁻¹

| Output Speed n_2 [min ⁻¹] | Ratio i | Motor power P_{1M} [kW] | Output torque M_{2M} [Nm] | Service factor f.s. | Nominal power P_{1R} [kW] | Nominal torque M_{2R} [Nm] | Available B5 motor flanges | | Available B14 motor flanges | | Dynamic efficiency RD | Tooth Module M_n [mm] | Ratios code |
|---|--------------|---------------------------------|-----------------------------------|------------------------|-----------------------------------|------------------------------------|----------------------------|----|-----------------------------|----|---------------------------------|----------------------------|-------------|
| | | | | | | | A | B | O | P | | | |
| | | | | | | | 56 | 63 | 56 | 63 | | | |
| 10.0 | 140 | 0.12 | 57 | 1.2 | 0.14 | 69 | B | | B-C | | 50 | 2.2 | 01 |
| 7.0 | 200 | 0.12 | 79 | 0.9 | 0.11 | 69 | B | | B-C | | 48 | 2.2 | 02 |
| 5.0 | 280 | 0.12* | 69 | <0.8 | 0.08 | 69 | B | | B-C | | 45 | 2.4 | 03 |
| 3.3 | 420 | 0.12* | 69 | <0.8 | 0.07 | 69 | B | | B-C | | 36 | 1.6 | 04 |
| 2.5 | 560 | 0.12* | 69 | <0.8 | 0.05 | 69 | B | | B-C | | 33 | 2.5 | 05 |
| 1.9 | 740 | 0.12* | 69 | <0.8 | 0.05 | 69 | B | | B-C | | 30 | 1.8 | 06 |
| 1.5 | 920 | 0.12* | 69 | <0.8 | 0.04 | 69 | B | | B-C | | 27 | 1.5 | 07 |
| 1.3 | 1120 | 0.12* | 69 | <0.8 | 0.03 | 69 | B | | B-C | | 26 | 2.5 | 08 |
| 0.9 | 1480 | 0.12* | 69 | <0.8 | 0.03 | 69 | B | | B-C | | 24 | 1.8 | 09 |
| 0.8 | 1840 | 0.12* | 69 | <0.8 | 0.02 | 69 | B | | B-C | | 22 | 1.5 | 10 |
| 0.6 | 2400 | 0.12* | 69 | <0.8 | 0.02 | 69 | B | | B-C | | 21 | 1.2 | 11 |

A) Motor Flanges Available
Flange Motore Disponibili

B) Supplied with Reduction Bushing
Fornito con Bussola di Riduzione

B) Available on Request without reduction bushing
Disponibile a Richiesta senza Bussola di Riduzione

C) Motor Flange Holes Position
Posizione Fori Flangia Motore

* Power higher than the maximum one which can be supported by the gearbox. Select according to the torque M_{2R}
Potenza superiore a quella massima sopportabile dal riduttore. Selezionare in base al momento torcente M_{2R}

EN Unit 453 is supplied with synthetic oil, providing "long life" lubrication. For mounting position V5-V6 please contact us. See table 1 for lubrication and recommended quantity. In table 2 please see possible radial loads and axial loads on the gearbox. For complete documentation please visit our web site.

I Il riduttore tipo 453 viene fornito lubrificato a vita con olio sintetico. Per posizioni V5-V6 contattare il ns. servizio tecnico. Vedi tab.1 per oli e quantità consigliati. In tab.2 sono presenti i carichi radiali e assiali applicabili al riduttore. Per la documentazione completa consulta il nostro sito.

D Für die Lebensdauerschmierung ist das Getriebe der Größe 453 mit synthetischem Öl befüllt. Bei Einbaulage V5 oder V6 bitten wir um Rücksprache. In Tabelle 1 ist die Schmiermenge und das empfohlene Schmiermittel angegeben. In Tabelle 2 sind die zulässigen Radial- und Axialbelastungen des Getriebes aufgeführt. Die komplette Dokumentation, Wartungs- und Inbetriebnahmeanleitungen finden Sie unter.

E El reductor tamaño 453 se suministra, lubricado de por vida con aceite sintético. Para las posiciones V5 y V6 contactar con nuestro servicio técnico. Ver tabla 1, para cantidades y aceites recomendados. En la tabla 2, se encuentran las cargas radiales y axiales admitidas por el reductor. Para documentación completa, consultar nuestra Web.

LUBRICATION 453 Oil 0.09 Lt. 0.03 Lt.

Quantity 0.09/0.03 Lt.

AGIP Telium VSF 320 **SHELL** Omala S4 WE 320

For all details on lubrication and plugs check our website **tab. 1**
Per maggiori dettagli su lubrificazione e tappi olio vedi il nostro sito web

RADIAL AND AXIAL LOADS

Output shaft
Albero di uscita

| n_2 [min ⁻¹] | FA [N] | FR [N] |
|-------------------------------|-----------|-----------|
| 25 | 300 | 1800 |
| 15 | 400 | 2000 |

Input shaft
albero in entrata

| n_1 [min ⁻¹] | FA [N] | FR [N] |
|-------------------------------|-----------|-----------|
| 1400 | 20 | 100 |

***Strong axial loads in the DX direction are not allowed.**
Non sono consentiti forti carichi assiali con direzione DX

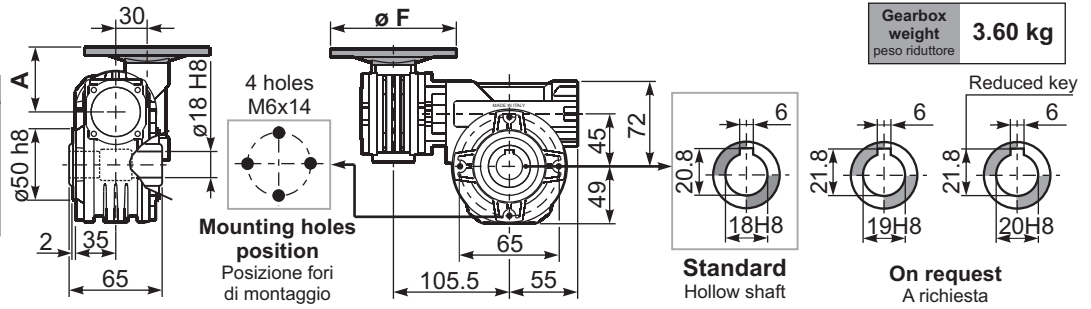
tab. 2

SELECT THIS TYPE AND THIS SPECIFIC SIZE ON THE WEB PAGES TO GET COMPLETE TECHNICAL DATA.
Selezionare tipo e gandezza specifica nel sito web per la documentazione completa.

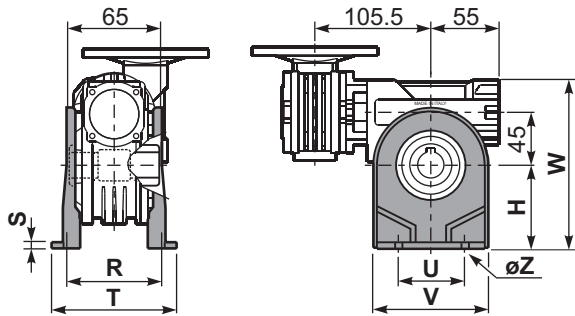
3D dimensions on request

P453FB... Basic wormbox
Riduttore base

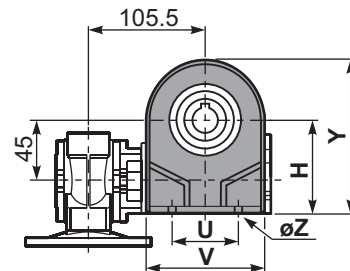
| M. flanges | Kit code | øF | A |
|------------|------------|-----|------|
| 56B5 | K030.4.041 | 120 | 61.5 |
| 63B5 | K030.4.042 | 140 | 62.5 |
| 56B14 | K030.4.046 | 80 | 61.5 |
| 63B14 | K030.4.045 | 90 | 62.5 |



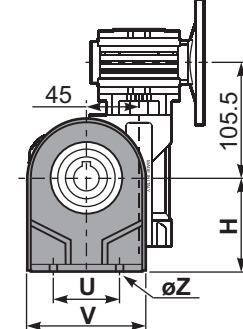
P453PA... Feet
Piedini



P453PB... Feet
Piedini

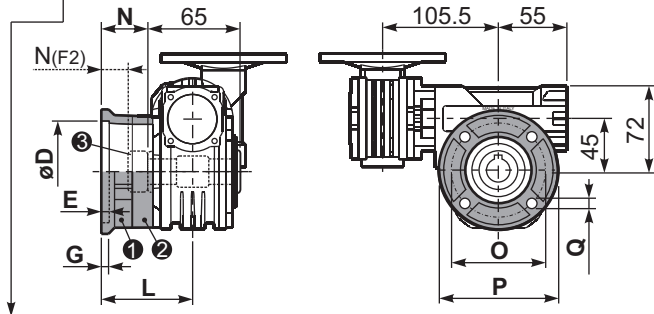


P453PV... Feet
Piedini



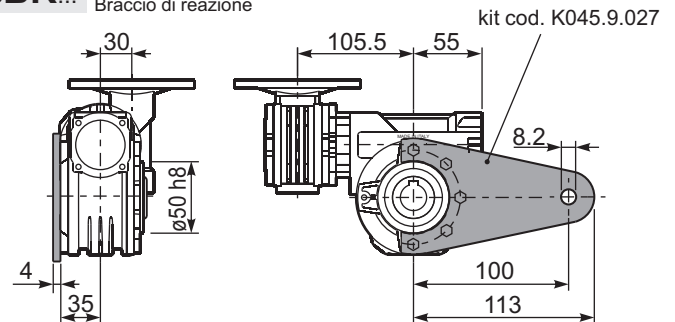
| | H | R | S | T | U | V | Y | W | øZ | kit code |
|--------|----|----|---|-----|----|----|-----|-----|-------|-------------|
| type B | 72 | 81 | 3 | 100 | 52 | 98 | 121 | 144 | ø10.5 | K045.9.022 |
| type S | 71 | 84 | 8 | 100 | 70 | 90 | 120 | 143 | ø8 | KS045.9.023 |

P453FC... Output flange
Flangia uscita

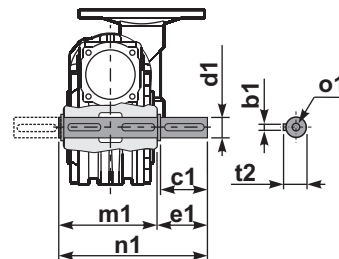


| type B | øD | E | G | L | N | O | P | Q | kit code |
|--------|--|---|----|------|----|-----|-----|-----|-------------------------------|
| FC | 60 ^{+0.15} / _{-0.05} | 9 | 9 | 60.5 | 28 | 87 | 110 | 8.5 | ① K045.9.010 ② - |
| FL | 60 ^{+0.15} / _{-0.05} | 9 | 9 | 90.5 | 58 | 87 | 110 | 8.5 | ① K045.9.010 ② K045.0.200 |
| type S | øD | E | G | L | N | O | P | Q | kit code |
| F1 | 95 ^{+0.20} / _{-0.15} | 4 | 11 | 73.5 | 41 | 115 | 140 | 9 | ① KS045.9.013 ② - |
| F2 | 60 ^{+0.15} / _{-0.05} | 9 | 9 | 60.5 | 19 | 87 | 110 | 8.5 | ① KS045.9.010 ② S045.0.204 |
| F3 | 80 ^{+0.030} / ₀ | 3 | 8 | 51.5 | 19 | 100 | 120 | 9 | ① KS045.9.014 ② - |

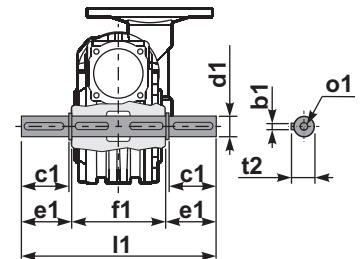
P453BR... Reaction arm
Braccio di reazione



P453....S... Single Shaft
Albero lento semplice

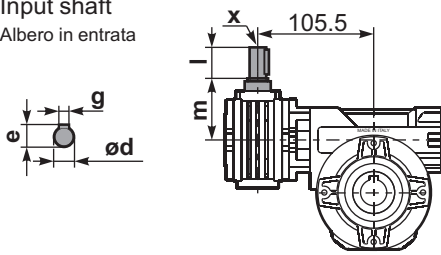


P453....D... Double Shaft
Albero lento bisp.



- ① kit cod. K045.5.028 type B
kit cod. KS045.5.030 type S
- ② kit cod. K045.5.029 type B
kit cod. KS045.5.031 type S

R453FB... Input shaft
Albero in entrata



| | ød | e | g | l | m | x | kit code |
|--------|------|------|---|----|----|---|---------------------------|
| type B | 9 h6 | 10.2 | 3 | 20 | 58 | - | ① K030.5.006 PAM63 ② - |
| type S | - | - | - | - | - | - | ① - ② - |

| | b1 | c1 | d1 | e1 | f1 | l1 | m1 | n1 | t2 | o1 |
|--------|----|----|--|------|----|-----|----|-------|------|-------|
| type B | 6 | 32 | 18 ^{-0.005} / _{-0.020} | 43 | 65 | 151 | 70 | 113 | 20.5 | M6x18 |
| type S | 6 | 40 | 19 ^{-0.005} / _{-0.020} | 58.5 | 65 | 182 | 70 | 128.5 | 21.5 | M8x20 |