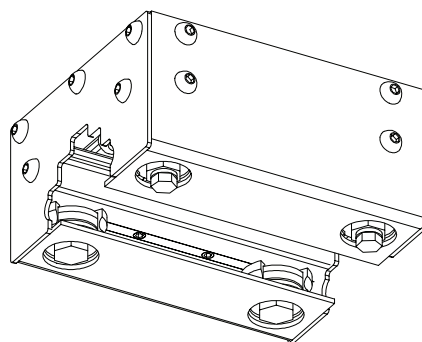
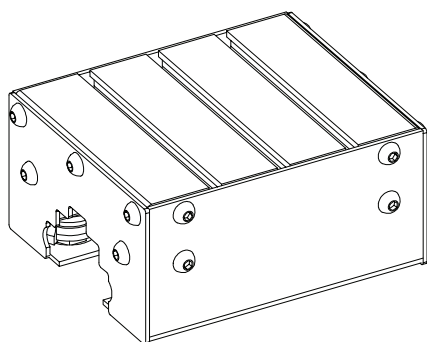


# carrelli cava 8

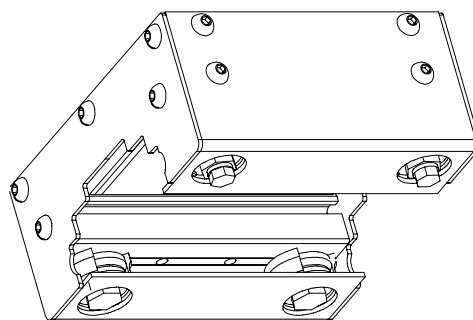
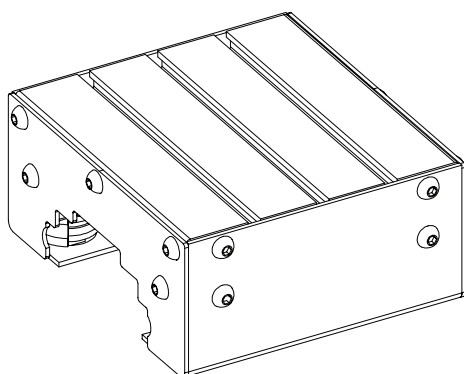
## Carrelli tipo D per G45

moduli utilizzabili	B	codice	note
ML03-04-05-07	150	15GL08.150200.D1	
ML03-04-05-07	200	15GL08.200200.D2	
ML03-04-05-07	250	15GL08.250200.D3	



## Carrelli tipo D per G90

moduli utilizzabili	B	codice	note
ML08-09-09P-15	200	15GL08.195200.D2	
ML08-09-09P-15	250	15GL08.250200.D3	



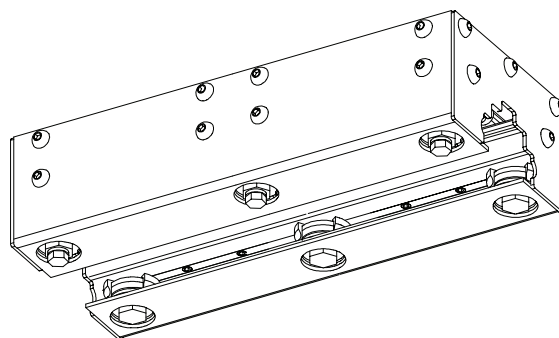
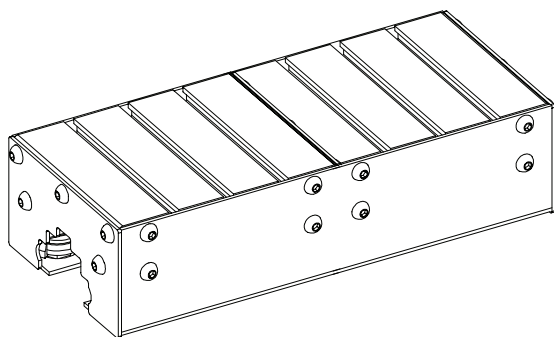
18.03.03

15GL08-13.0

# carrelli cava 8

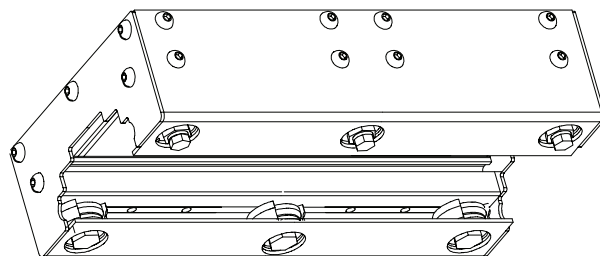
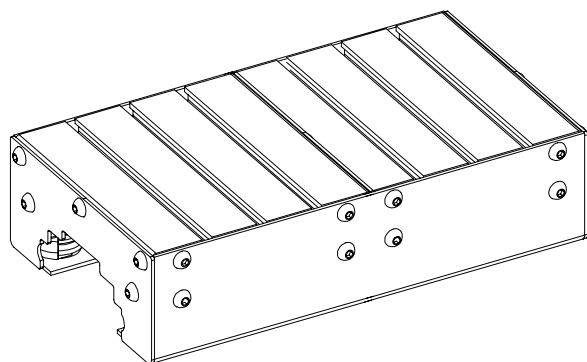
## Carrelli tipo E per G45

moduli utilizzabili	B	codice	note
ML03-04-05-07	150	15GL08.150380.E1	
ML03-04-05-07	200	15GL08.250380.E2	
ML03-04-05-07	250	15GL08.300380.E3	



## Carrelli tipo E per G90

moduli utilizzabili	B	codice	note
ML08-09-09P-15	200	15GL08.250380.E2	
ML08-09-09P-15	250	15GL08.300380.E3	



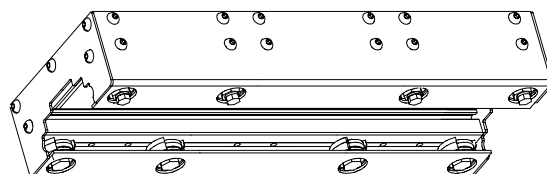
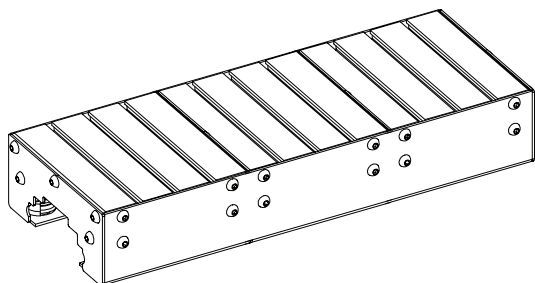
18.03.03

15GL08-14.0

# carrelli cava 8

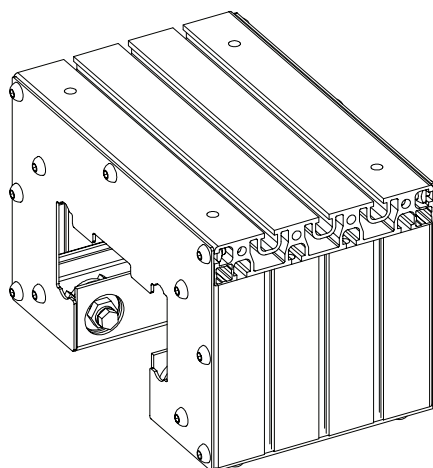
## Carrelli tipo F per G90

moduli utilizzabili	B	codice	note
ML08-09-09P-15	200	15GL08.300560.F2	
ML08-09-09P-15	250	15GL08.350560.F3	



## Carrelli tipo U per G90

moduli utilizzabili	B	codice	note
ML14-14P	286	15GL08.286200.DU	
ML14-14P	350	15GL08.286380.EU	
ML14-14P	400	15GL08.286560.FU	



18.03.03

15GL08-15.0