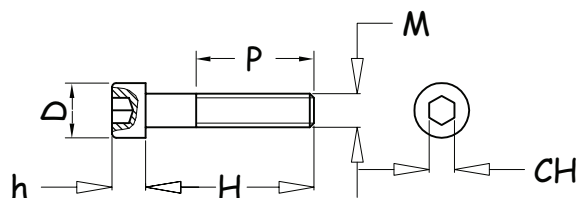


viteria cava 8

Vite testa cilindrica esagono incassato (normale)

vite	acciaio	D	h	H	p	M	CH	peso (g)	codice	note
TCEIN M4x16	8.8	7	4	16	16	4	3	1.7	02VT08.004016.TCEIN	
TCEIN M4x20	8.8	7	4	20	20	4	3	2	02VT08.004020.TCEIN	
TCEIN M4x25	8.8	7	4	25	25	4	3	3	02VT08.004025.TCEIN	
TCEIN M4x30	8.8	7	4	30	20	4	3	4	02VT08.004030.TCEIN	
TCEIN M5x16	8.8	8.5	5	16	16	5	4	4	02VT08.005016.TCEIN	
TCEIN M5x20	8.8	8.5	5	20	20	5	4	4.5	02VT08.005020.TCEIN	
TCEIN M5x25	8.8	8.5	5	25	25	5	4	5	02VT08.005025.TCEIN	
TCEIN M5x30	8.8	8.5	5	30	22	5	4	6	02VT08.005030.TCEIN	
TCEIN M6x16	8.8	10	6	16	16	6	5	5	02VT08.006016.TCEIN	
TCEIN M6x18	8.8	10	6	18	18	6	5	6	02VT08.006018.TCEIN	
TCEIN M6x20	8.8	10	6	20	20	6	5	6.5	02VT08.006020.TCEIN	
TCEIN M6x25	8.8	10	6	25	25	6	5	7	02VT08.006025.TCEIN	
TCEIN M6x30	8.8	10	6	30	30	6	5	8	02VT08.006030.TCEIN	
TCEIN M6x60	8.8	10	6	60	24	6	5	14	02VT08.006060.TCEIN	
TCEIN M8x16	8.8	13	8	16	16	8	6	12	02VT08.008016.TCEIN	
TCEIN M8x20	8.8	13	8	20	20	8	6	13	02VT08.008020.TCEIN	
TCEIN M8x25	8.8	13	8	25	25	8	6	15	02VT08.008025.TCEIN	
TCEIN M8x30	8.8	13	8	30	30	8	6	16	02VT08.008030.TCEIN	
TCEIN M8x35	8.8	13	8	35	35	8	6	18	02VT08.008035.TCEIN	
TCEIN M8x40	8.8	13	8	40	28	8	6	20	02VT08.008040.TCEIN	
TCEIN M8x45	8.8	13	8	45	28	8	6	22	02VT08.008045.TCEIN	
TCEIN M8x50	8.8	13	8	50	28	8	6	24	02VT08.008050.TCEIN	
TCEIN M8x60	8.8	13	8	60	28	8	6	27	02VT08.008060.TCEIN	
TCEIN M8x65	8.8	13	8	65	28	8	6	28	02VT08.008065.TCEIN	
TCEIN M8x110	8.8	13	8	110	28	8	6	46	02VT08.008110.TCEIN	



Vite testa cilindrica esagono incassato (ribassata)

vite	acciaio	D	h	H	p	M	CH	peso (g)	codice	note
TCEIR M8x16	10.9	13	5	16	16	8	5	8	02VT08.008016.TCEIR	
TCEIR M8x20	10.9	13	5	20	20	8	5	10	02VT08.008020.TCEIR	
TCEIR M8x25	10.9	13	5	25	25	8	5	12	02VT08.008025.TCEIR	
TCEIR M8x30	10.9	13	5	30	30	8	5	14	02VT08.008030.TCEIR	
TCEIR M8x35	10.9	13	5	35	35	8	5	16	02VT08.008035.TCEIR	
TCEIR M8x40	10.9	13	5	40	28	8	5	18	02VT08.008040.TCEIR	
TCEIR M8x45	10.9	13	5	45	28	8	5	20	02VT08.008045.TCEIR	
TCEIR M8x50	10.9	13	5	50	28	8	5	22	02VT08.008050.TCEIR	
TCEIR M8x60	10.9	13	5	60	28	8	5	24	02VT08.008060.TCEIR	
TCEIR M8x75	10.9	13	5	75	28	8	5	32	02VT08.008075.TCEIR	

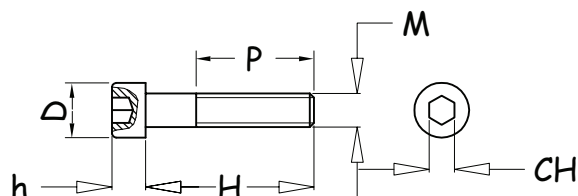
20.03.03

02VT08-01.C

viteria cava 8

Vite testa cilindrica esagono incassato

vite	acciaio	D	h	H	p	M	CH	peso (g)	codice	note
TCEIN M4x16	8.8	7	4	16	16	4	3	1.7	02VT08.004016.TCEIN	
TCEIN M4x20	8.8	7	4	20	20	4	3	2	02VT08.004020.TCEIN	
TCEIN M4x25	8.8	7	4	25	25	4	3	3	02VT08.004025.TCEIN	
TCEIN M4x30	8.8	7	4	30	20	4	3	4	02VT08.004030.TCEIN	
TCEIN M5x16	8.8	8.5	5	16	16	5	4	4	02VT08.005016.TCEIN	
TCEIN M5x20	8.8	8.5	5	20	20	5	4	4.5	02VT08.005020.TCEIN	
TCEIN M5x25	8.8	8.5	5	25	25	5	4	5	02VT08.005025.TCEIN	
TCEIN M5x30	8.8	8.5	5	30	22	5	4	6	02VT08.005030.TCEIN	
TCEIN M6x16	8.8	10	6	16	16	6	5	5	02VT08.006016.TCEIN	
TCEIN M6x18	8.8	10	6	18	18	6	5	6	02VT08.006018.TCEIN	
TCEIN M6x20	8.8	10	6	20	20	6	5	6.5	02VT08.006020.TCEIN	
TCEIN M6x25	8.8	10	6	25	25	6	5	7	02VT08.006025.TCEIN	
TCEIN M6x30	8.8	10	6	30	30	6	5	8	02VT08.006030.TCEIN	
TCEIN M6x60	8.8	10	6	60	24	6	5	14	02VT08.006060.TCEIN	
TCEIR M8x16	10.9	13	5	16	16	8	5	8	02VT08.008016.TCEIR	
TCEIR M8x20	10.9	13	5	20	20	8	5	10	02VT08.008020.TCEIR	
TCEIR M8x25	10.9	13	5	25	25	8	5	12	02VT08.008025.TCEIR	
TCEIR M8x30	10.9	13	5	30	30	8	5	14	02VT08.008030.TCEIR	
TCEIR M8x35	10.9	13	5	35	35	8	5	16	02VT08.008035.TCEIR	
TCEIR M8x40	10.9	13	5	40	28	8	5	18	02VT08.008040.TCEIR	
TCEIR M8x45	10.9	13	5	45	28	8	5	20	02VT08.008045.TCEIR	
TCEIR M8x50	10.9	13	5	50	28	8	5	22	02VT08.008050.TCEIR	
TCEIR M8x60	10.9	13	5	60	28	8	5	24	02VT08.008060.TCEIR	
TCEIR M8x75	10.9	13	5	75	28	8	5	32	02VT08.008075.TCEIR	
TCEIN M8x16	8.8	13	8	16	16	8	6	12	02VT08.008016.TCEIN	
TCEIN M8x20	8.8	13	8	20	20	8	6	13	02VT08.008020.TCEIN	
TCEIN M8x25	8.8	13	8	25	25	8	6	15	02VT08.008025.TCEIN	
TCEIN M8x30	8.8	13	8	30	30	8	6	16	02VT08.008030.TCEIN	
TCEIN M8x35	8.8	13	8	35	35	8	6	18	02VT08.008035.TCEIN	
TCEIN M8x40	8.8	13	8	40	28	8	6	20	02VT08.008040.TCEIN	
TCEIN M8x45	8.8	13	8	45	28	8	6	22	02VT08.008045.TCEIN	
TCEIN M8x50	8.8	13	8	50	28	8	6	24	02VT08.008050.TCEIN	
TCEIN M8x60	8.8	13	8	60	28	8	6	27	02VT08.008060.TCEIN	
TCEIN M8x65	8.8	13	8	65	28	8	6	28	02VT08.008065.TCEIN	
TCEIN M8x110	8.8	13	8	110	28	8	6	46	02VT08.008110.TCEIN	



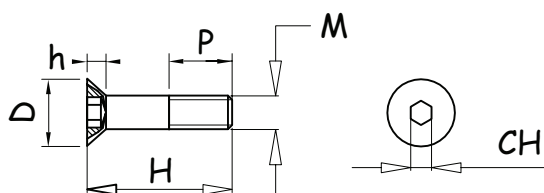
02.10.02

02VT08-01.C

viteria cava 8

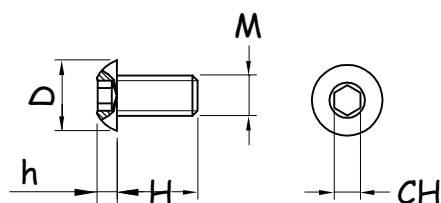
Vite testa svasata esagono incassato

vite	acciaio	D	h	H	P	M	CH	peso (g)	codice	note
TSEI M8X20	10.9	16	4.5	20	15.5	8	5	9	02VT08.008020.TSEI	
TSEI M8X35	10.9	16	4.5	35	30.5	8	5	13	02VT08.008035.TSEI	
TSEI M8X60	10.9	16	4.5	60	15.5	8	5	21	02VT08.008060.TSEI	



Vite testa bombata esagono incassato

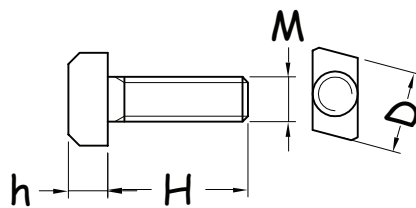
vite	acciaio	D	h	H	M	CH	peso (g)	codice	note
TBEIN M8X16	10.9	14	4	16	8	5	8	02VT08.008016.TBEIN	



viteria cava 8

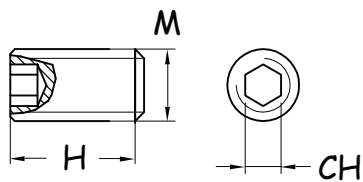
Prigioniero in gola

prigioniero	acciaio	D	h	H	M	peso (g)	codice	note
M8X25	10.9	14	7	25	8	13	02VT08.008025.ZP	

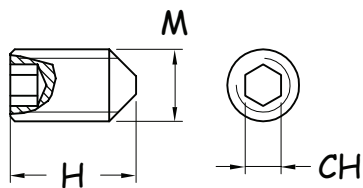


Grani

grano	acciaio	H	M	CH	peso (g)	codice	note
M8X14	10.9	14	8	4	4.1	02VT08.008014.ETC	
M8X14	10.9	14	8	4	4	02VT08.008014.EP	



grano cilindrico

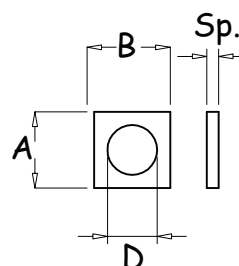
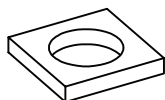


grano a punta

dadi speciali cava 8

Rondella quadra

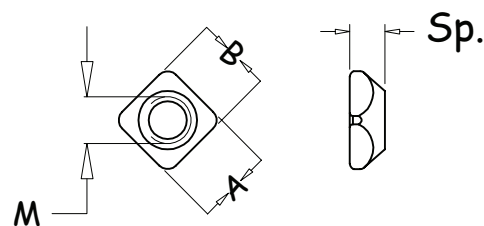
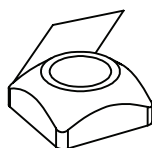
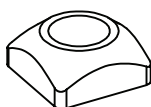
materiale	A	B	D	Sp.	peso (g)	codice	note
Fe 360	13	13	8.5	2	1.5	03DQ08.008013.RQZ	



Dado quadro smussato

dado	A	B	Sp.	M	peso (g)	codice	note
M4x13	13	13	6	4	6	03DQ08.004013.Z	
M5x13	13	13	6	5	5.5	03DQ08.005013.Z	
M6x13	13	13	6	6	5	03DQ08.006013.Z	
M8x13	13	13	6	8	4.5	03DQ08.008013.Z	
M4x13	13	13	6	4	6.5	03DQ08.004013.ZM	
M5x13	13	13	6	5	6	03DQ08.005013.ZM	
M6x13	13	13	6	6	5.5	03DQ08.006013.ZM	
M8x13	13	13	6	8	4	03DQ08.008013.ZM	

materiale = Fe 360



02.10.02

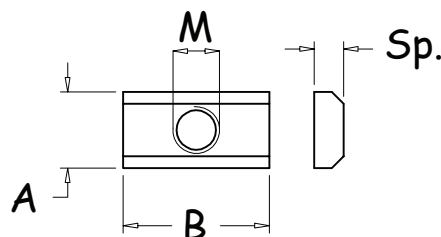
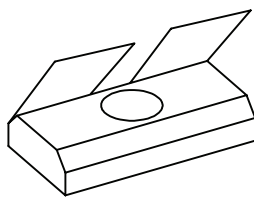
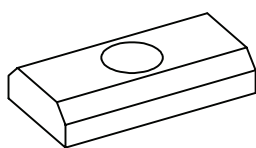
03DQ08-01.0

dadi speciali cava 8

Dado rettangolare

dado	A	B	Sp.	M	peso (g)	codice	note
M8x25	13	25	5	8	8	03DQ08.008025.Z	
M8x25	13	25	5	8	8	03DQ08.008025.ZM	

materiale = Fe360



Barretta a " T "

barretta	A	B	I	Sp.	M	peso (g)	codice	note
M8x90	13	90	45	10	8	56	03DQ08.008090.Z	
M8x180	13	180	45	10	8	112	03DQ08.008180.Z	

materiale = C 40

