

piedi e staffaggi cava 6

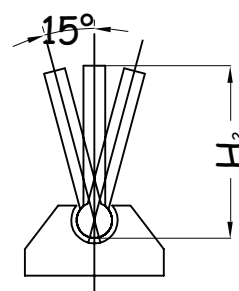
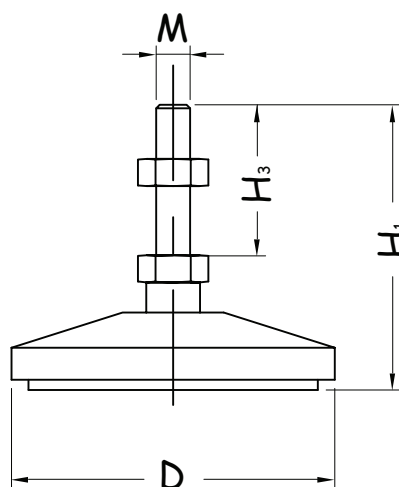
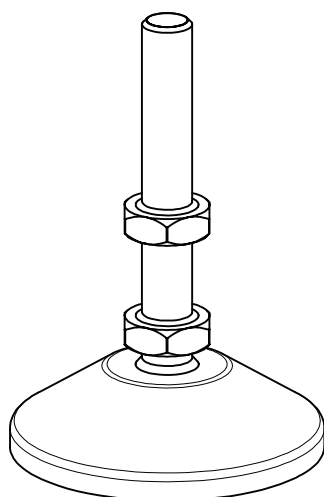
Piede snodato antivibrante

piede	D	M	H ₁	H ₂	H ₃	peso (g)	codice	note
D=40 M6x65	40	6	65	53	33	55	07PI06.006065.D40	
D=40 M8x75	40	8	75	63	42	60	07PI08.008075.D40	
D=40 M12x75	40	12	75	63	42	85	07PI08.012075.D40	
D=50 M6x65	50	6	65	53	33	60	07PI06.006065.D50	
D=50 M8x75	50	8	75	63	42	64	07PI08.008065.D50	
D=50 M12x75	50	12	75	63	42	91	07PI08.012065.D50	
D=80 M6x65	80	6	65	53	33	105	07PI06.006065.D80	
D=80 M8x70	80	8	70	63	42	111	07PI08.008070.D80	
D=80 M12x70	80	12	70	63	42	138	07PI08.012070.D80	

materiale stelo: Fe 360 zincato o INOX a richiesta

materiale piattello: PTE

materiale antivibrante: Gomma vulcanizzata



07.10.02

07PI06-01

pedi e staffaggi cava 6

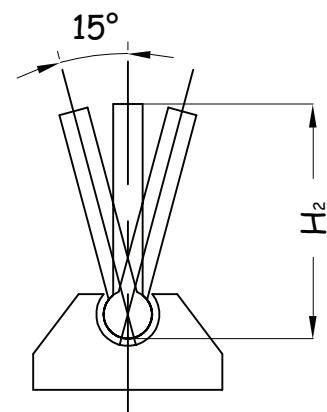
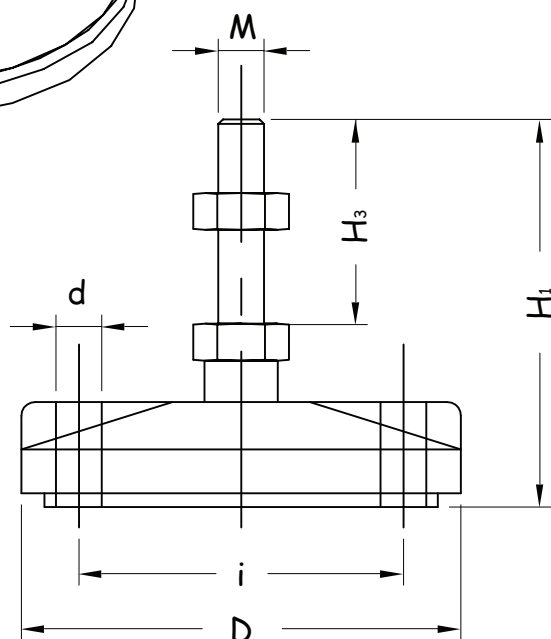
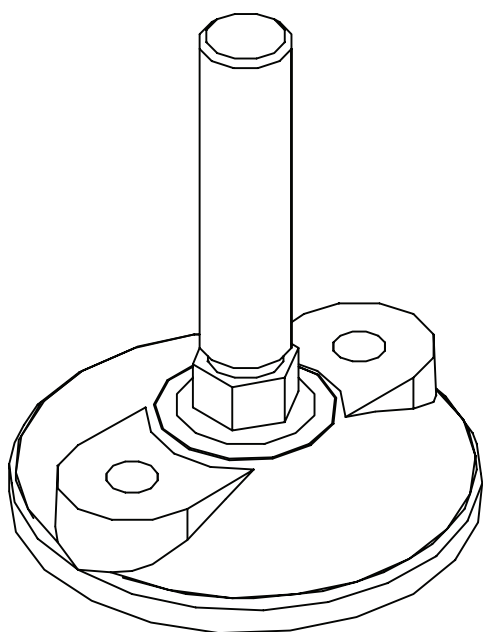
Piede snodato antivibrante con fori di fissaggio a terra

pede	D	M	H ₁	H ₂	H ₃	i	d	peso (g)	codice	note
D=80 M6x65	80	6	65	53	33	55	8.5	105	07PI06.006065.D80F	
D=80 M8x70	80	8	70	63	42	55	8.5	118	07PI08.008070.D80F	
D=80 M12x70	80	12	70	63	42	55	8.5	145	07PI08.012070.D80F	

materiale stelo: Fe 360 zincato o INOX a richiesta

materiale piattello: PTE

materiale antivibrante: Gomma vulcanizzata



07.10.02

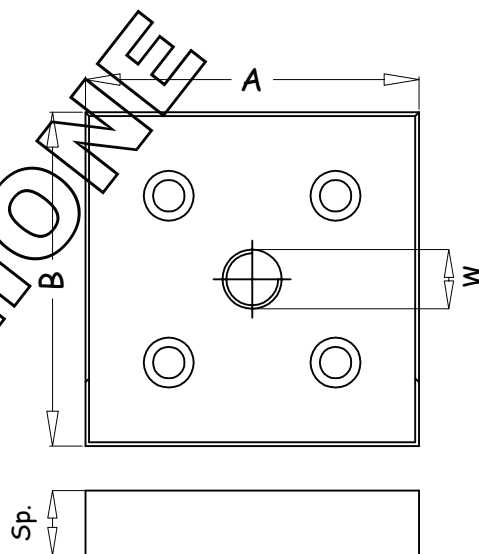
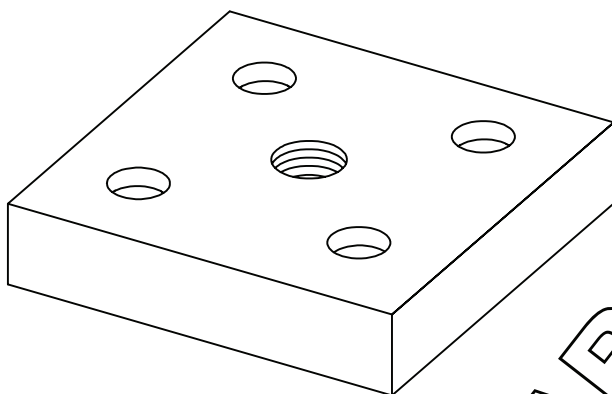
07PI06-02

piedi e staffaggi cava 6

Basetta per piedi e golfari

basetta	A	B	Sp.	M	peso (g)	codice	Euro
basetta M8	30	60	10	8	--	07PI06.030060.M8	
basetta M12	30	60	10	12	--	07PI06.030060.M12	
basetta M8	60	60	10	8	--	07PI06.060060.M8	
basetta M12	60	60	10	12	--	07PI06.060060.M12	

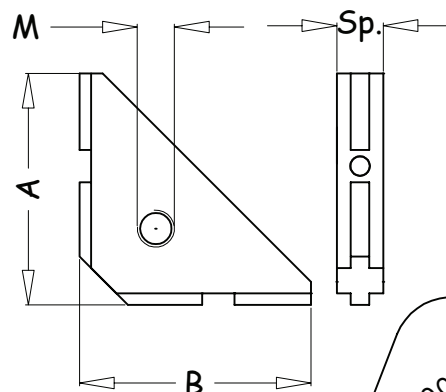
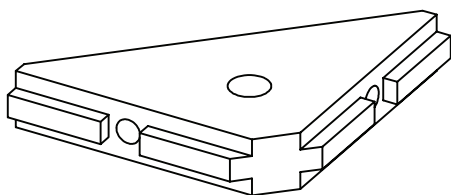
Materiale e trattamento = alluminio sabbiato



Saetta di rinforzo angolare

saetta	A	B	Sp.	M	peso (g)	codice	Euro
saetta M8	60	60	15	8	--	07PI06.100100.M8	
saetta M12	60	60	15	12	--	07PI06.100100.M12	

Materiale e trattamento = alluminio sabbiato



10.10.02

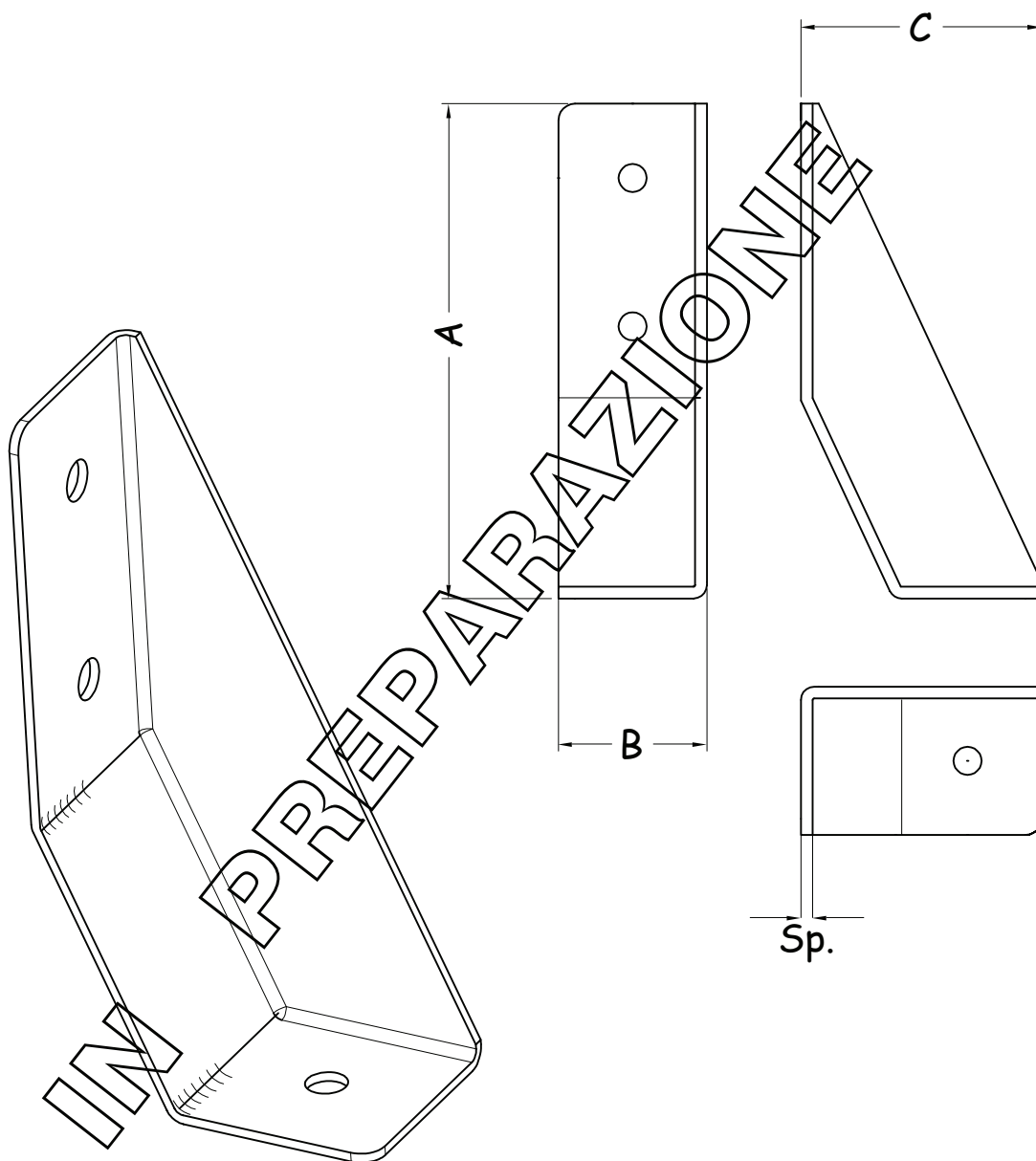
07PI06-03.0

piedi e staffaggi cava 6

Staffa singola di ancoraggio a terra

A	B	C	Sp.	peso (g)	codice	note
100	30	--	2	--	07PI06.030030.H100S	

Materiale e trattamento: Fe 360 vernicito



07.10.02

07PI06-04.0